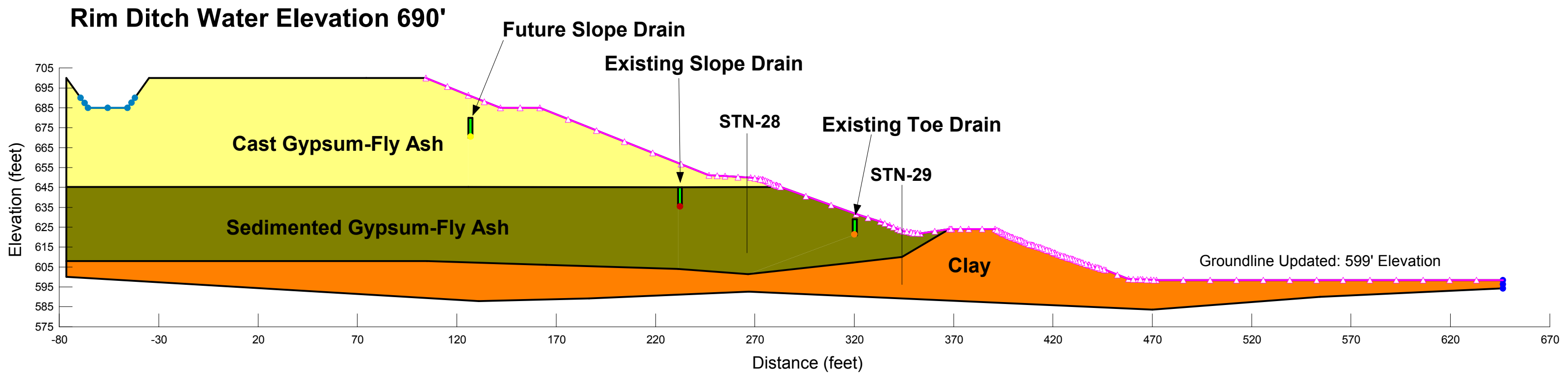
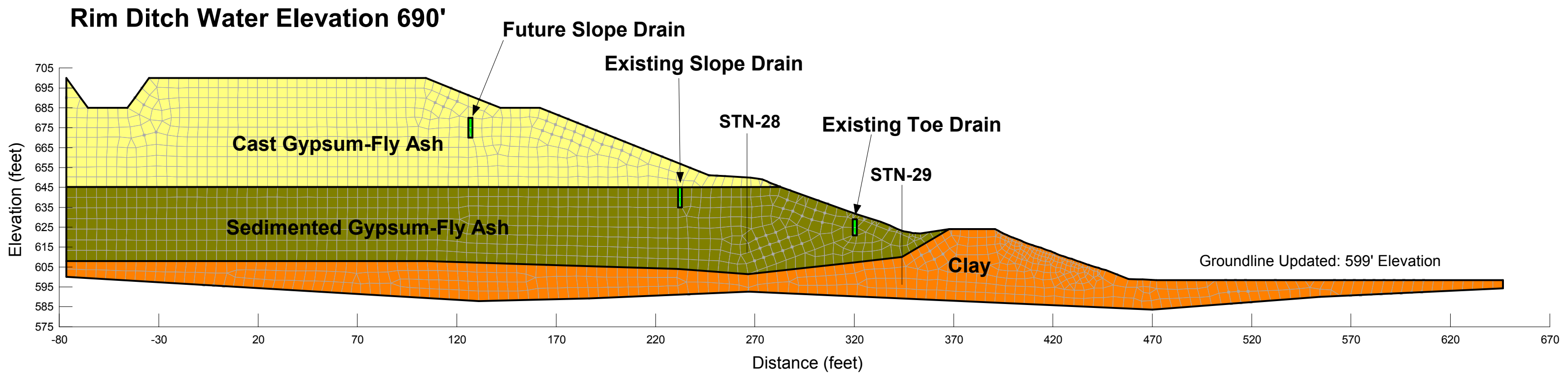


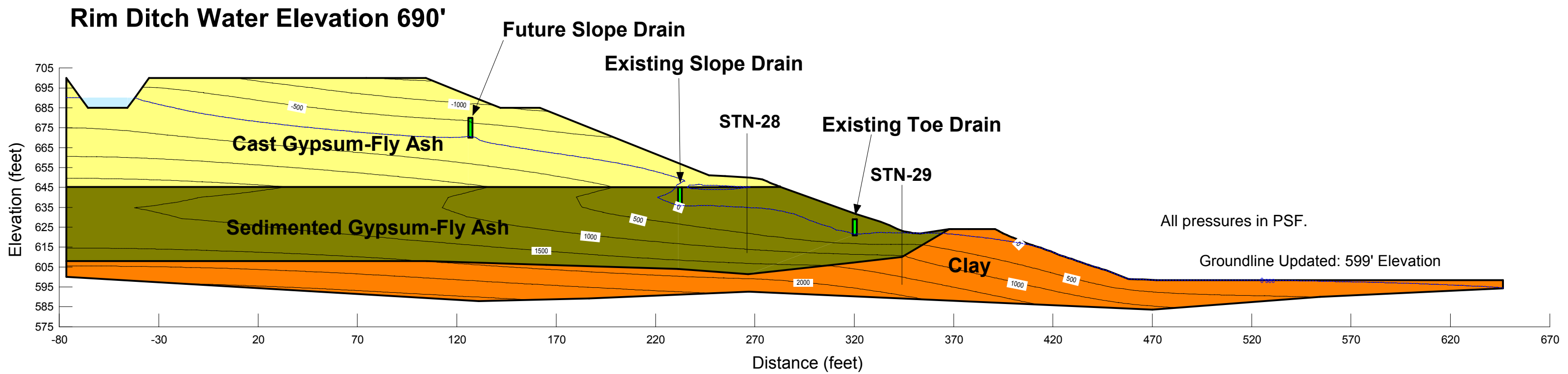
# Widows Creek Fossil Plant Gypsum Stack - Section A - 5 Year Buildout with Drains Subsurface Profile and Boundary Conditions



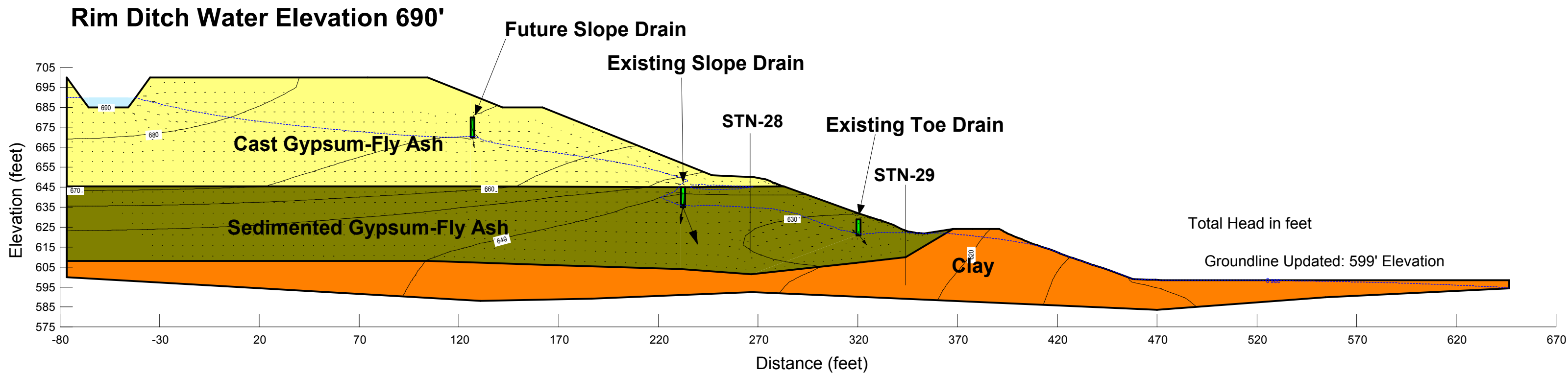
**Widows Creek Fossil Plant  
Gypsum Stack - Section A - 5 Year Buildout with Drains  
Finite Element Mesh**



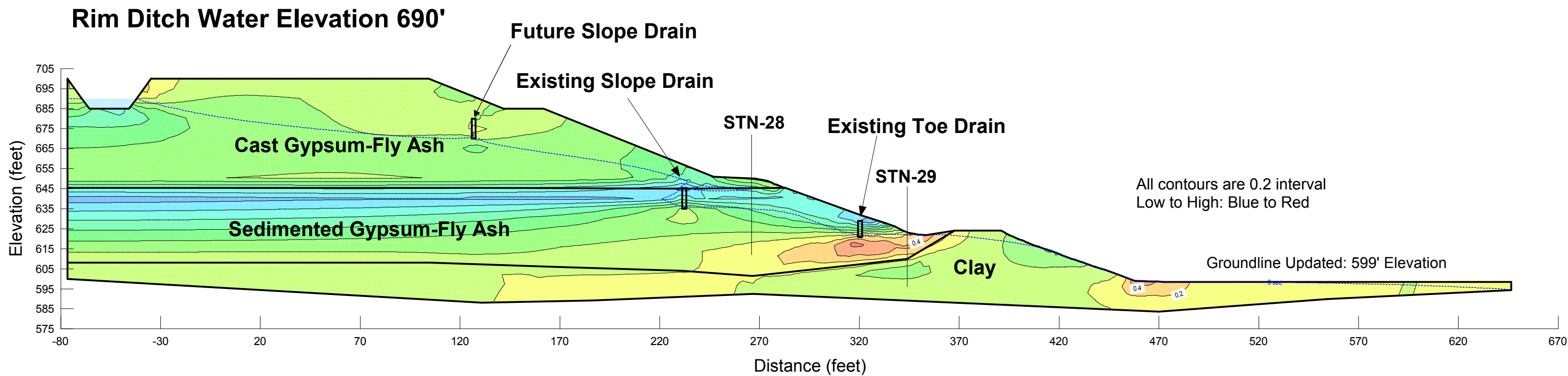
# Widows Creek Fossil Plant Gypsum Stack - Section A - 5 Year Buildout with Drains Pore-Water Pressure Contours



# Widows Creek Fossil Plant Gypsum Stack - Section A - 5 Year Buildout with Drains Total Head Contours and Flow Vectors

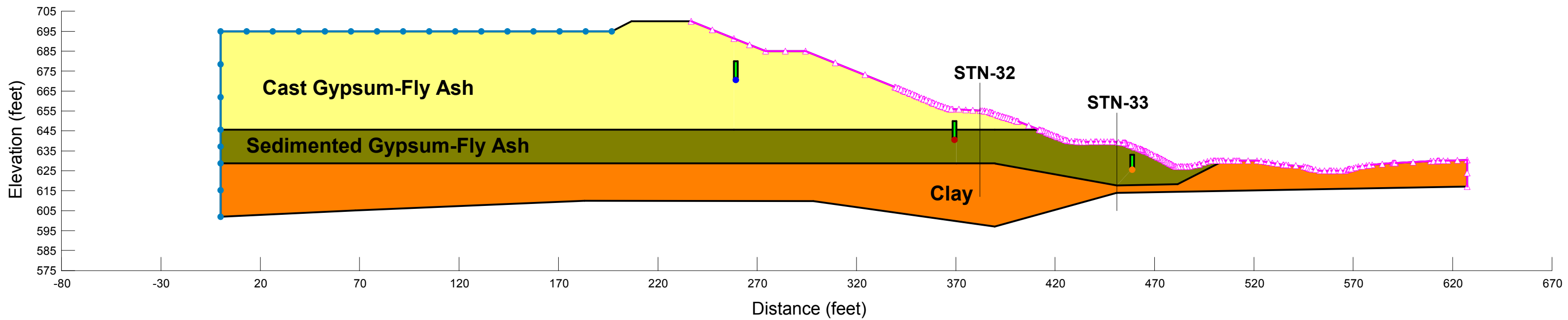


# Widows Creek Fossil Plant Gypsum Stack - Section A - 5 Year Buildout with Drains Vertical Gradient Contours



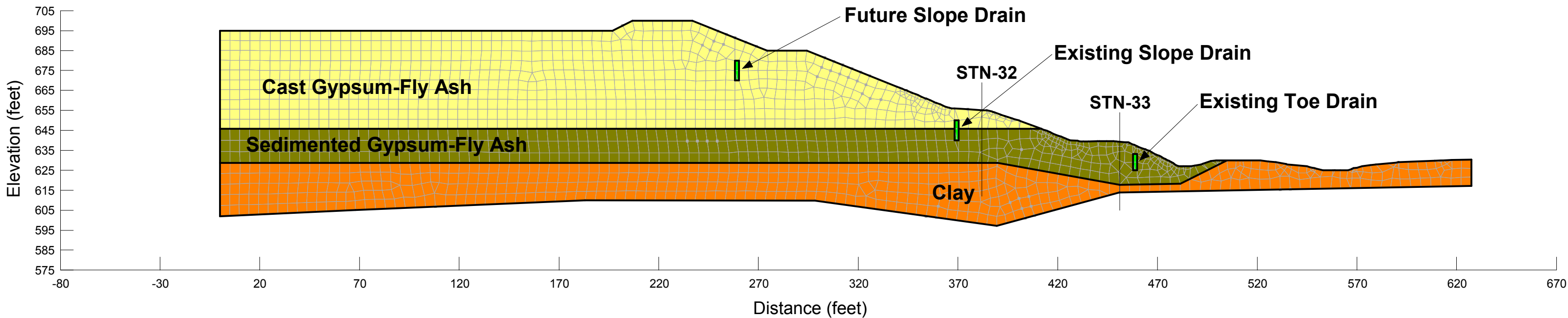
# Widows Creek Fossil Plant Gypsum Stack - Section D - 5 Year Buildout with Drains Subsurface Profile and Boundary Conditions

Pond 2A Normal Pool 695'



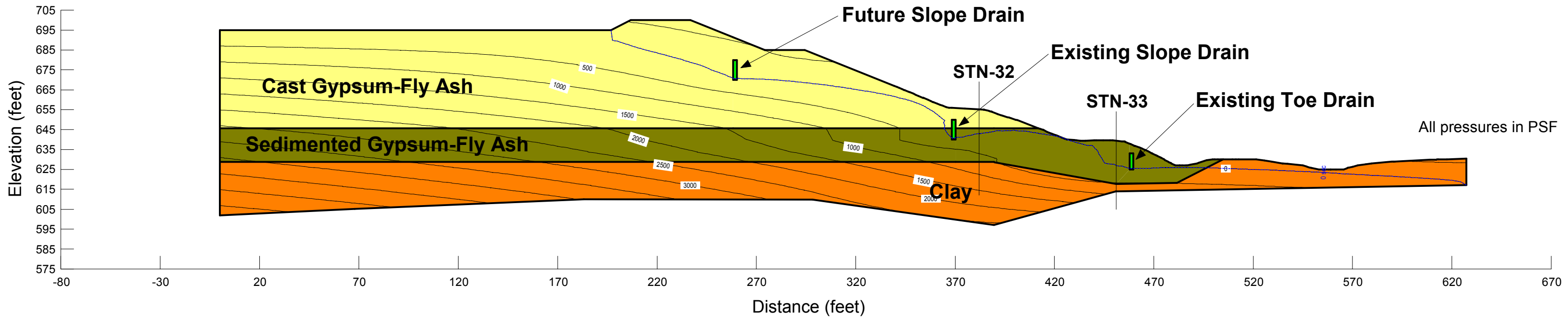
**Widows Creek Fossil Plant  
Gypsum Stack - Section D - 5 Year Buildout with Drains  
Finite Element Mesh**

**Pond 2A Normal Pool 695'**



# Widows Creek Fossil Plant Gypsum Stack - Section D - 5 Year Buildout with Drains Pore-Water Pressure Contours

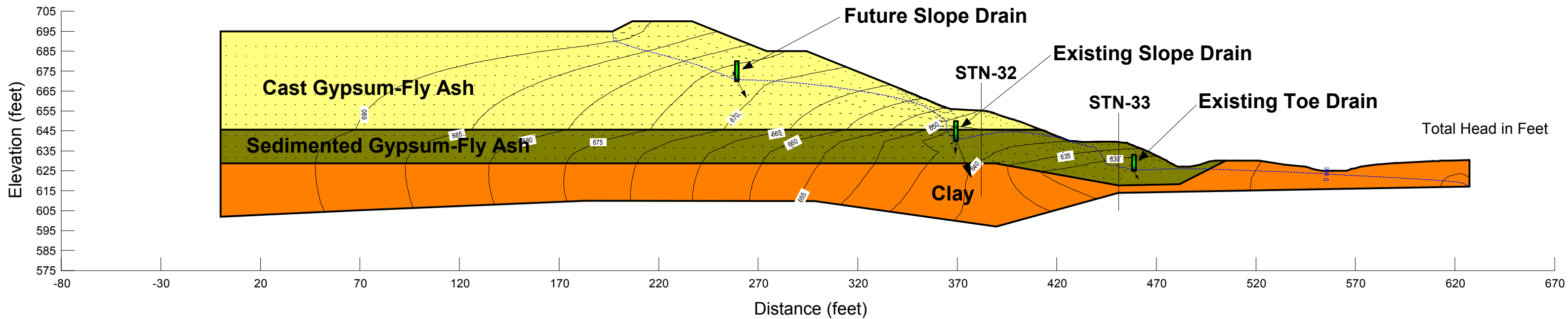
Pond 2A Normal Pool 695'





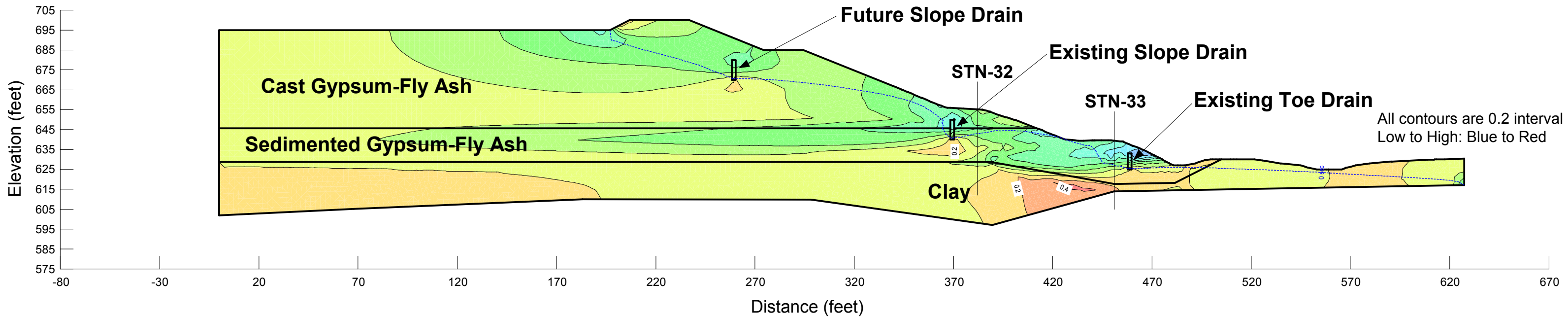
# Widows Creek Fossil Plant Gypsum Stack - Section D - 5 Year Buildout with Drains Total Head Contours and Flow Vectors

Pond 2A Normal Pool 695'

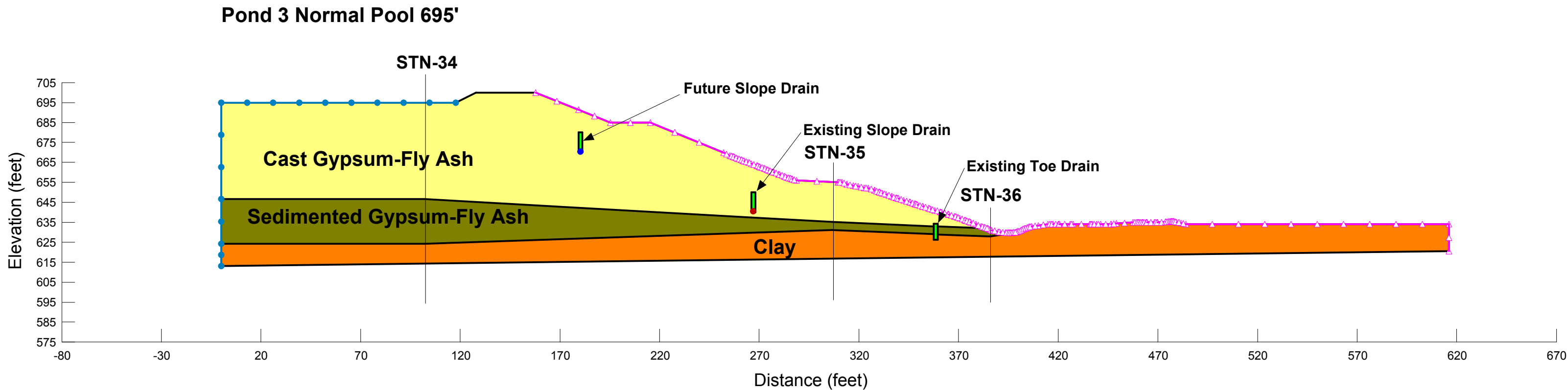


# Widows Creek Fossil Plant Gypsum Stack - Section D - 5 Year Buildout with Drains Vertical Gradient Contours

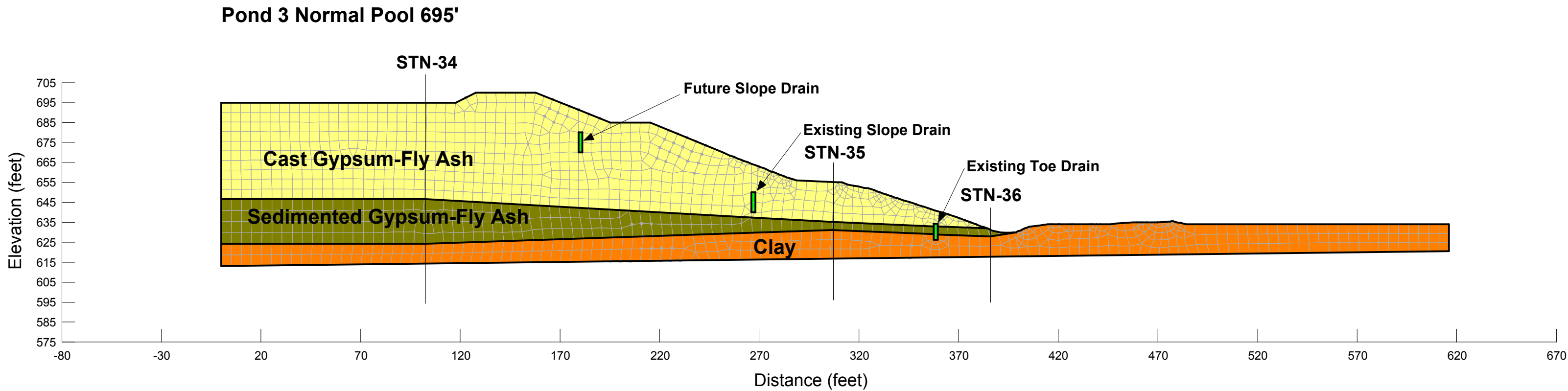
Pond 2A Normal Pool 695'



# Widows Creek Fossil Plant Gypsum Stack - Section F - 5 Year Buildout with Drains Subsurface Profile and Boundary Conditions

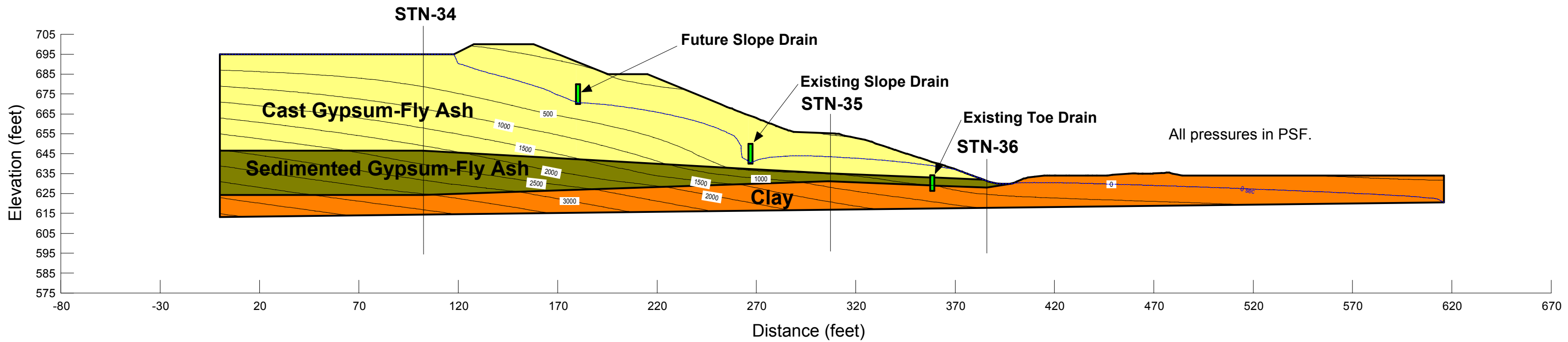


# Widows Creek Fossil Plant Gypsum Stack - Section F - 5 Year Buildout with Drains Finite Element Mesh



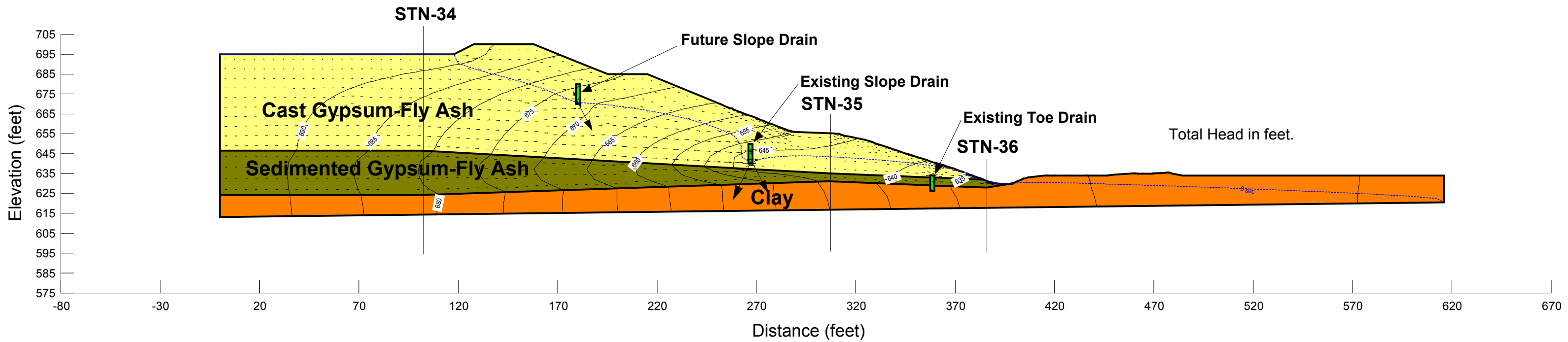
# Widows Creek Fossil Plant Gypsum Stack - Section F - 5 Year Buildout with Drains Pore-Water Pressure Contours

Pond 3 Normal Pool 695'



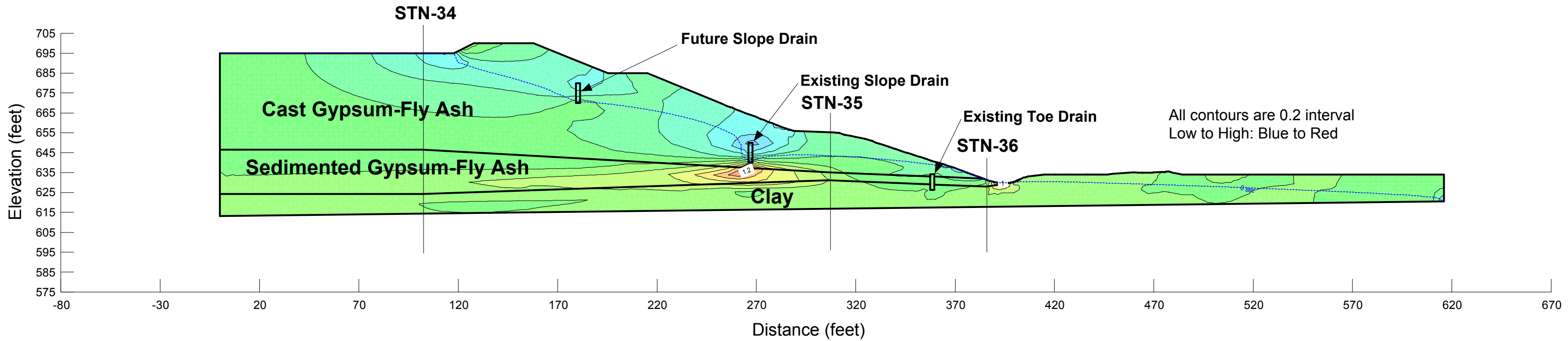
# Widows Creek Fossil Plant Gypsum Stack - Section F - 5 Year Buildout with Drains Total Head Contours and Flow Vectors

Pond 3 Normal Pool 695'



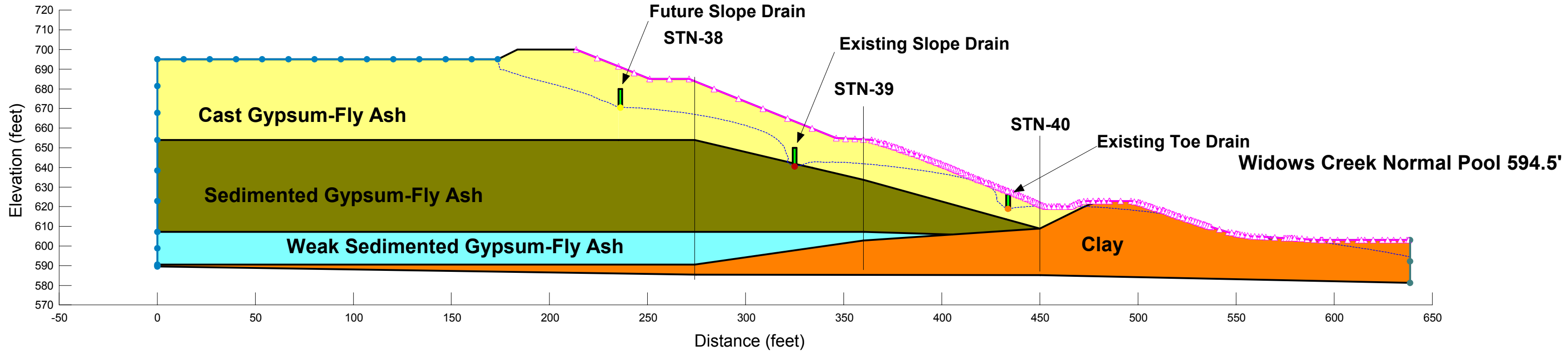
# Widows Creek Fossil Plant Gypsum Stack - Section F - 5 Year Buildout with Drains Vertical Gradient Contours

Pond 3 Normal Pool 695'



**Widows Creek Fossil Plant**  
**Gypsum Stack - Section H - 5 Year Buildout with Drains**  
**Subsurface Profile and Boundary Conditions**

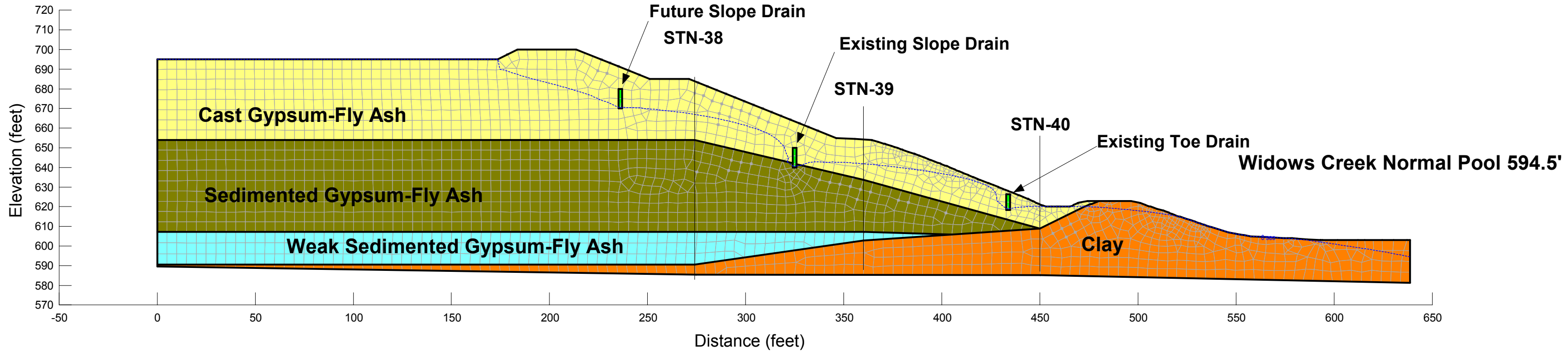
**Pond 3 Normal Pool 695'**





**Widows Creek Fossil Plant  
Gypsum Stack - Section H - 5 Year Buildout with Drains  
Finite Element Mesh**

**Pond 3 Normal Pool 695'**

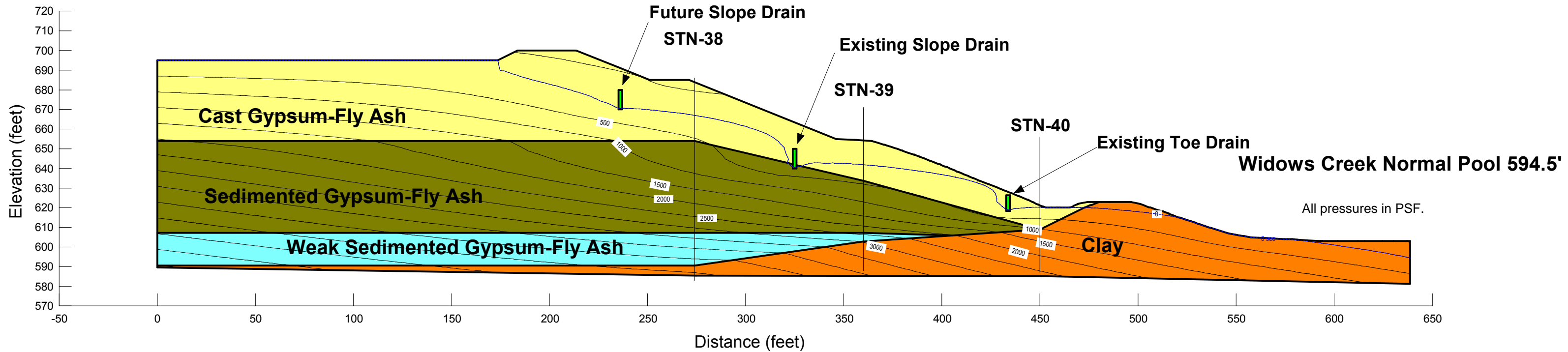


# Widows Creek Fossil Plant

## Gypsum Stack - Section H - 5 Year Buildout with Drains

### Pore-Water Pressure Contours

Pond 3 Normal Pool 695'

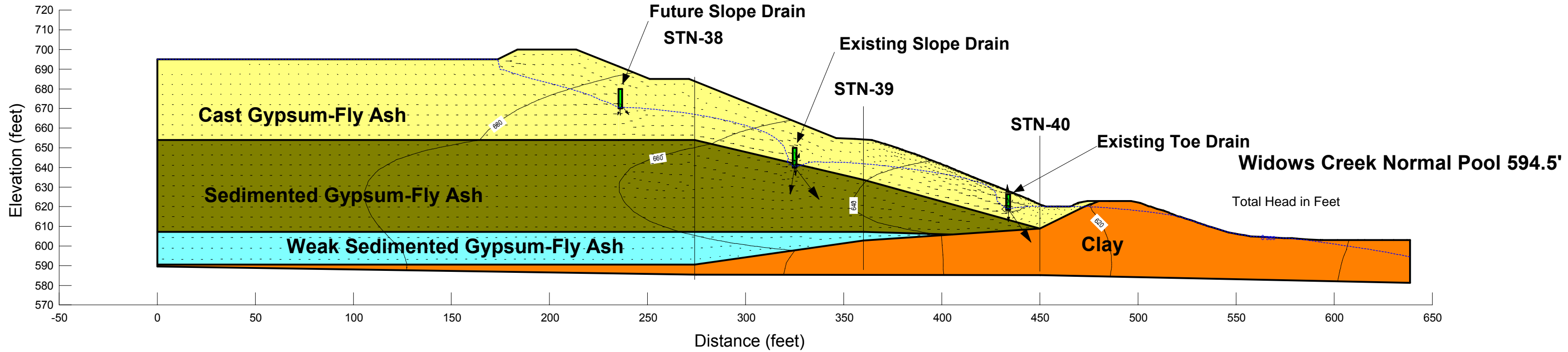


# Widows Creek Fossil Plant

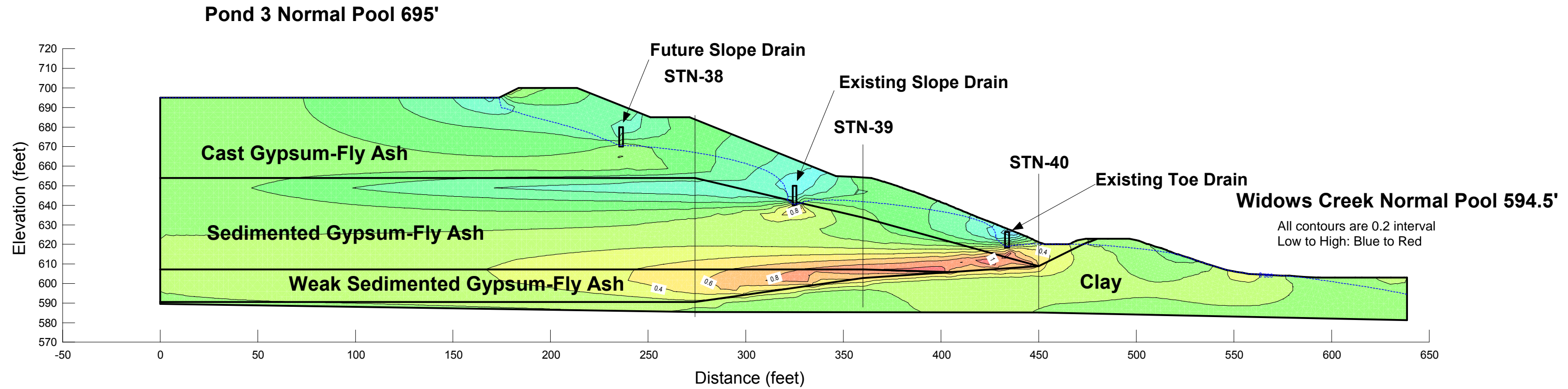
## Gypsum Stack - Section H - 5 Year Buildout with Drains

### Total Head Contours and Flow Vectors

**Pond 3 Normal Pool 695'**

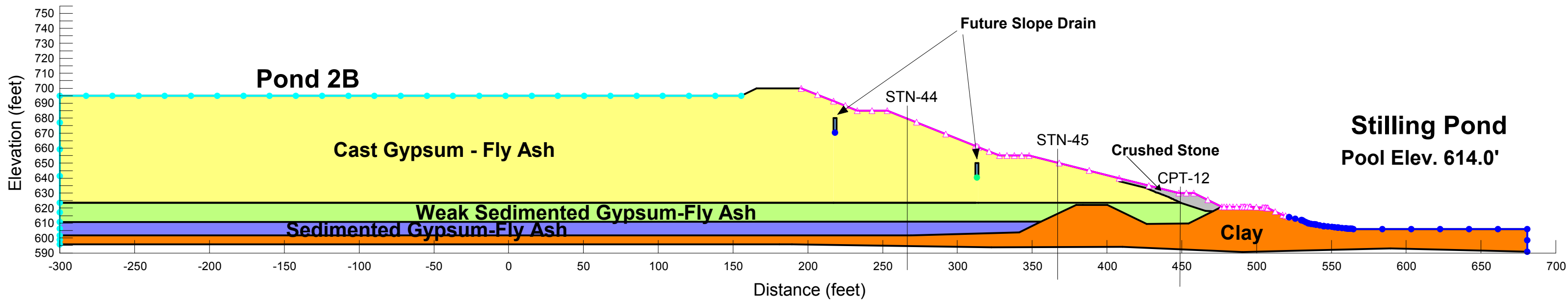


**Widows Creek Fossil Plant**  
**Gypsum Stack - Section H - 5 Year Buildout with Drains**  
**Vertical Gradient Contours**



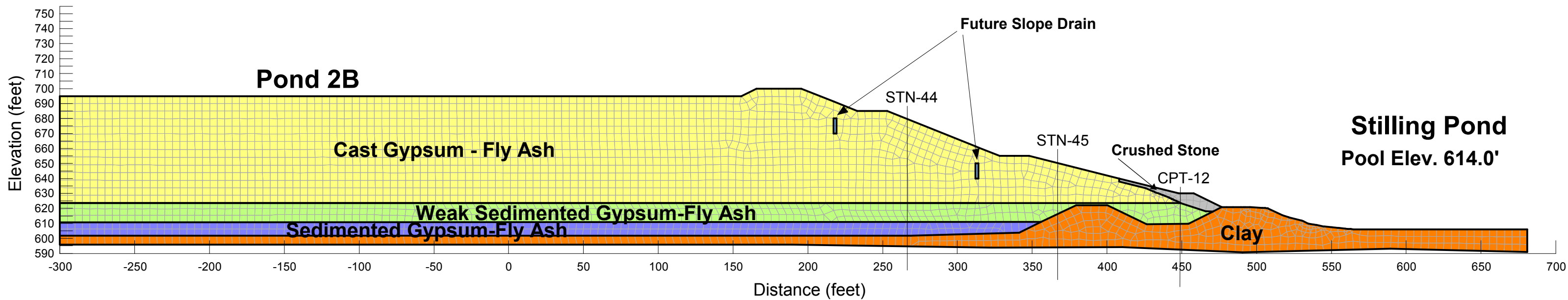
# Gypsum Stack - Section K 5 Year Buildout with Drains Subsurface Profile and Boundary Conditions

Normal Pool Operation 695'



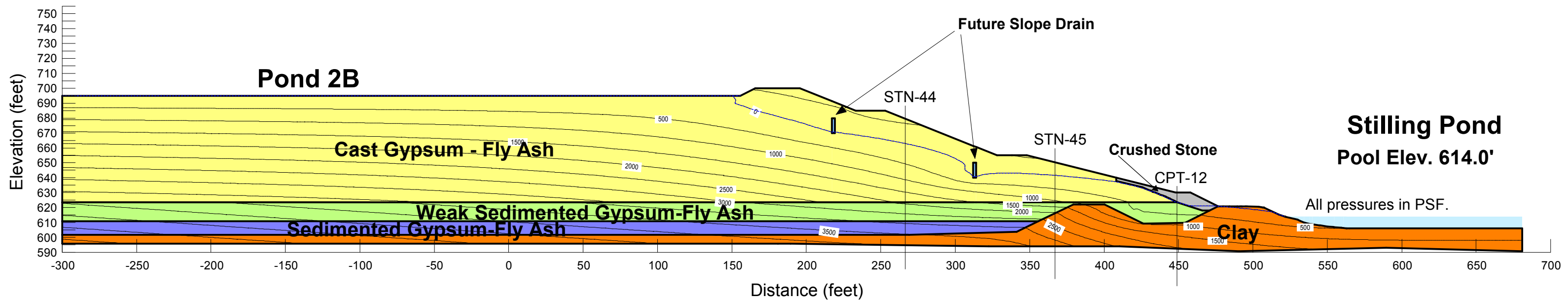
# Gypsum Stack - Section K 5 Year Buildout with Drains Finite Element Mesh

Normal Pool Operation 695'



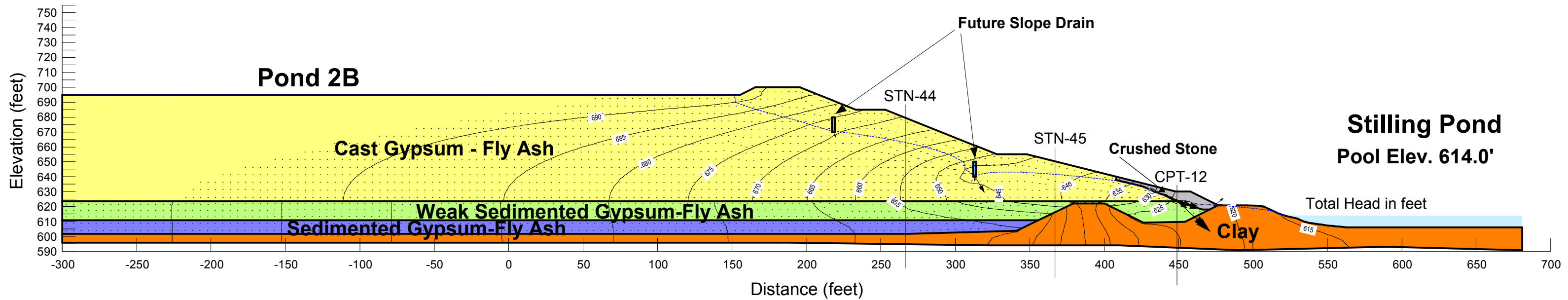
# Gypsum Stack - Section K 5 Year Buildout with Drains Pore-Water Pressure Contours

Normal Pool Operation 695'



# Gypsum Stack - Section K 5 Year Buildout with Drains Total Head Contours and Flow Vectors

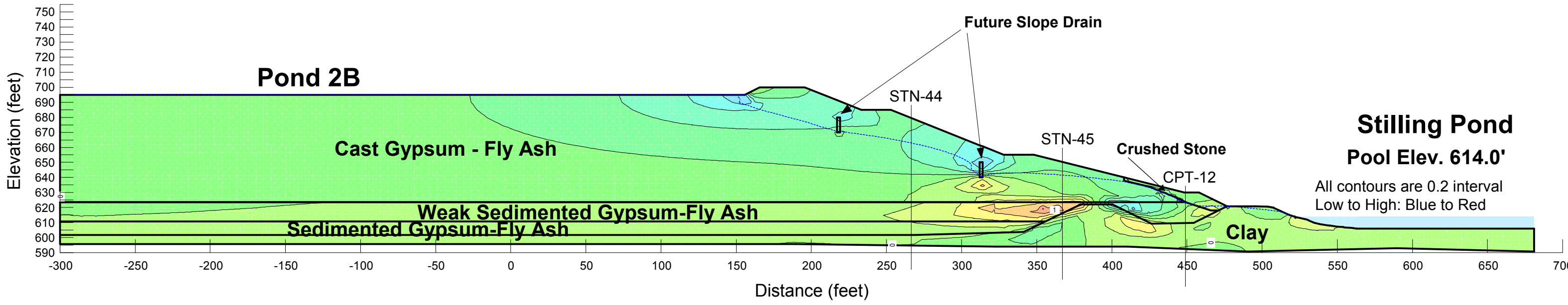
Normal Pool Operation 695'





# Gypsum Stack - Section K 5 Year Buildout with Drains Vertical Gradient Contours

**Normal Pool Operation 695'**



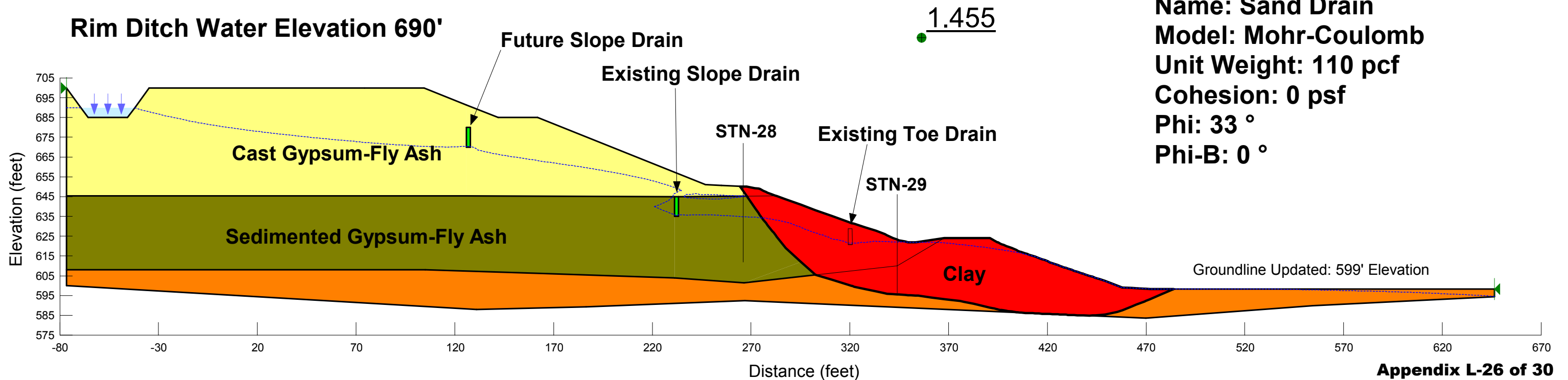
**Widows Creek Fossil Plant  
Gypsum Stack - Section A - 5 Year Buildout with Drains  
Optimized Failure**

**Name: Cast Gypsum-Flyash**  
**Model: Mohr-Coulomb**  
**Unit Weight: 113 pcf**  
**Cohesion: 0 psf**  
**Phi: 40 °**  
**Phi-B: 0 °**

**Name: Sedimented Gypsum-Flyash**  
**Model: Mohr-Coulomb**  
**Unit Weight: 112 pcf**  
**Cohesion: 0 psf**  
**Phi: 41 °**  
**Phi-B: 0 °**

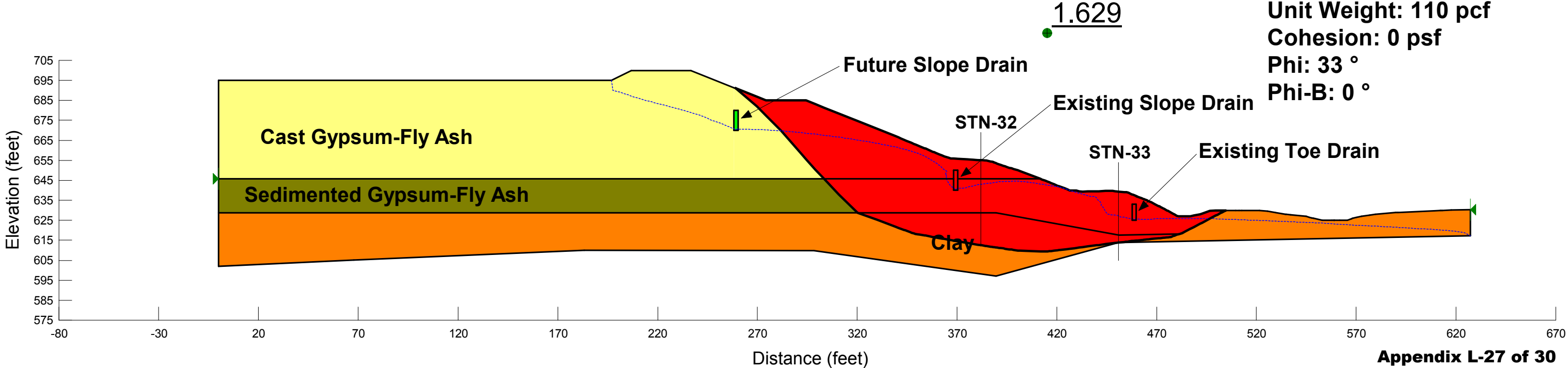
**Name: Clay**  
**Model: Mohr-Coulomb**  
**Unit Weight: 123 pcf**  
**Cohesion: 0 psf**  
**Phi: 25 °**  
**Phi-B: 0 °**

**Name: Sand Drain**  
**Model: Mohr-Coulomb**  
**Unit Weight: 110 pcf**  
**Cohesion: 0 psf**  
**Phi: 33 °**  
**Phi-B: 0 °**



**Widows Creek Fossil Plant  
Gypsum Stack - Section D - 5 Year Buildout with Drains  
Optimized Failure**

**Pond 2A Normal Pool 695'**



**Name: Cast Gypsum-Flyash**  
**Model: Mohr-Coulomb**  
**Unit Weight: 113 pcf**  
**Cohesion: 0 psf**  
**Phi: 40 °**  
**Phi-B: 0 °**

**Name: Sedimented Gypsum-Flyash**  
**Model: Mohr-Coulomb**  
**Unit Weight: 112 pcf**  
**Cohesion: 0 psf**  
**Phi: 41 °**  
**Phi-B: 0 °**

**Name: Clay**  
**Model: Mohr-Coulomb**  
**Unit Weight: 123 pcf**  
**Cohesion: 0 psf**  
**Phi: 25 °**  
**Phi-B: 0 °**

**Name: Sand Drain**  
**Model: Mohr-Coulomb**  
**Unit Weight: 110 pcf**  
**Cohesion: 0 psf**  
**Phi: 33 °**  
**Phi-B: 0 °**

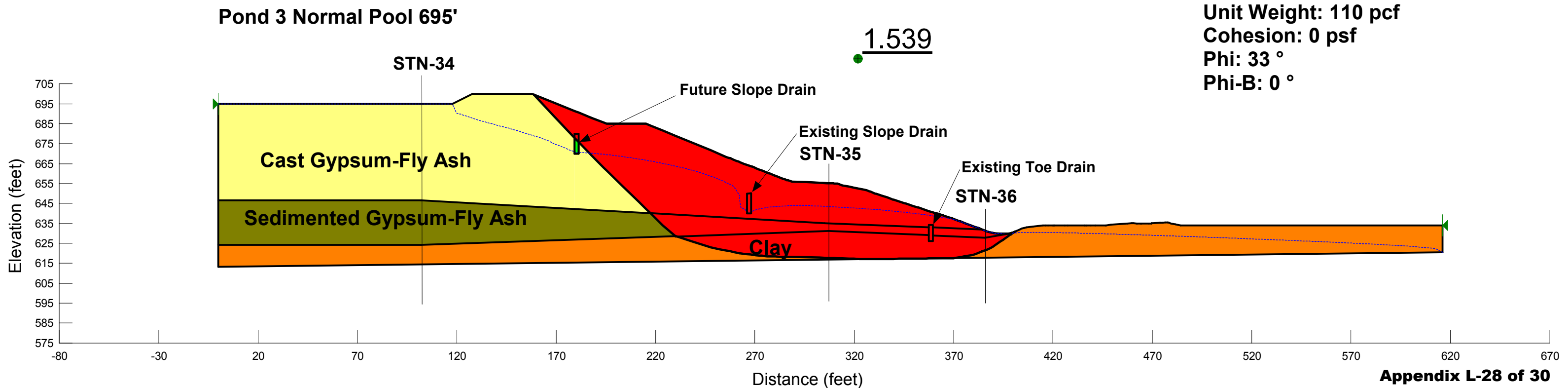
**Widows Creek Fossil Plant  
Gypsum Stack - Section F - 5 Year Buildout with Drains  
Optimized Failure**

**Name: Cast Gypsum-Flyash**  
**Model: Mohr-Coulomb**  
**Unit Weight: 113 pcf**  
**Cohesion: 0 psf**  
**Phi: 40 °**  
**Phi-B: 0 °**

**Name: Sedimented Gypsum-Flyash**  
**Model: Mohr-Coulomb**  
**Unit Weight: 112 pcf**  
**Cohesion: 0 psf**  
**Phi: 41 °**  
**Phi-B: 0 °**

**Name: Clay**  
**Model: Mohr-Coulomb**  
**Unit Weight: 123 pcf**  
**Cohesion: 0 psf**  
**Phi: 25 °**  
**Phi-B: 0 °**

**Name: Sand Drain**  
**Model: Mohr-Coulomb**  
**Unit Weight: 110 pcf**  
**Cohesion: 0 psf**  
**Phi: 33 °**  
**Phi-B: 0 °**



**Widows Creek Fossil Plant  
Gypsum Stack - Section H - 5 Year Buildout with Drains  
Optimized Failure**

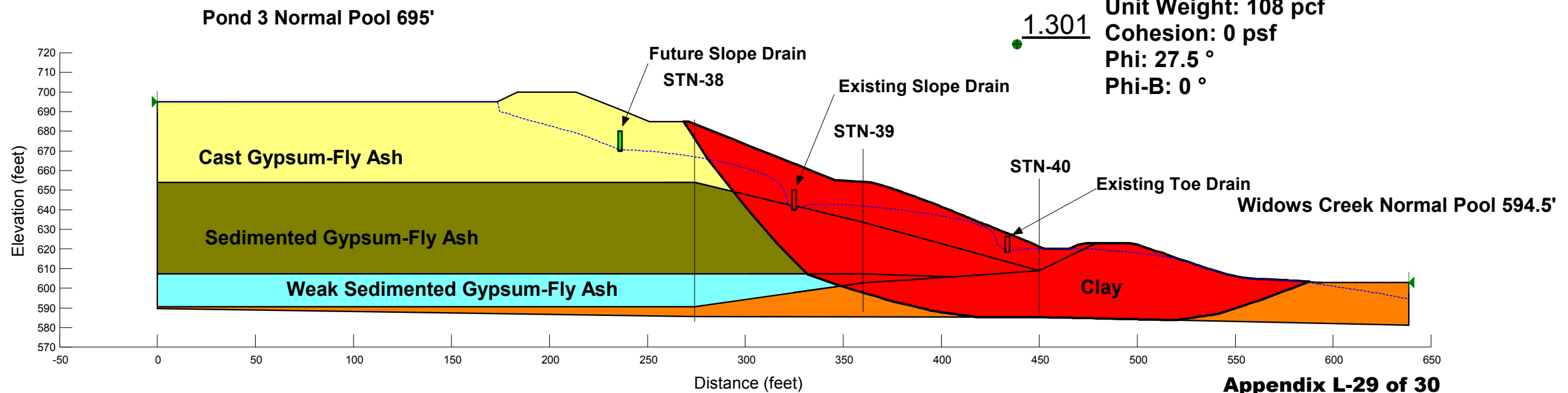
**Name: Cast Gypsum-Flyash**  
**Model: Mohr-Coulomb**  
**Unit Weight: 113 pcf**  
**Cohesion: 0 psf**  
**Phi: 40 °**  
**Phi-B: 0 °**

**Name: Sedimented Gypsum-Flyash**  
**Model: Mohr-Coulomb**  
**Unit Weight: 112 pcf**  
**Cohesion: 0 psf**  
**Phi: 41 °**  
**Phi-B: 0 °**

**Name: Clay**  
**Model: Mohr-Coulomb**  
**Unit Weight: 123 pcf**  
**Cohesion: 0 psf**  
**Phi: 25 °**  
**Phi-B: 0 °**

**Name: Sand Drain**  
**Model: Mohr-Coulomb**  
**Unit Weight: 110 pcf**  
**Cohesion: 0 psf**  
**Phi: 33 °**  
**Phi-B: 0 °**

**Name: Weak Sedimented Gypsum-Flyash**  
**Model: Mohr-Coulomb**  
**Unit Weight: 108 pcf**  
**Cohesion: 0 psf**  
**Phi: 27.5 °**  
**Phi-B: 0 °**



## Gypsum Stack - Section K 5 Year Buildout with Drains Optimized Failure

**Name:** Cast Gypsum-Flyash  
**Model:** Mohr-Coulomb  
**Unit Weight:** 113 pcf  
**Cohesion:** 0 psf  
**Phi:** 40 °  
**Phi-B:** 0 °

**Name:** Weak Sedimented Gypsum-Flyash  
**Model:** Mohr-Coulomb  
**Unit Weight:** 108 pcf  
**Cohesion:** 0 psf  
**Phi:** 27.5 °  
**Phi-B:** 0 °

**Name:** Sedimented Gypsum-Flyash  
**Model:** Mohr-Coulomb  
**Unit Weight:** 112 pcf  
**Cohesion:** 0 psf  
**Phi:** 41 °  
**Phi-B:** 0 °

**Name:** Clay  
**Model:** Mohr-Coulomb  
**Unit Weight:** 123 pcf  
**Cohesion:** 0 psf  
**Phi:** 25 °  
**Phi-B:** 0 °

**Name:** Class II Channel Lining  
**Model:** Mohr-Coulomb  
**Unit Weight:** 125 pcf  
**Cohesion:** 0 psf  
**Phi:** 35 °  
**Phi-B:** 0 °

**Name:** Sand Drain  
**Model:** Mohr-Coulomb  
**Unit Weight:** 110 pcf  
**Cohesion:** 0 psf  
**Phi:** 33 °  
**Phi-B:** 0 °

**Normal Pool Operation 695'**

